

PIER 61  
64

RIVERSIDE  
LIVING



# WELCOME HOME

AT EAST SIDE GALLERY

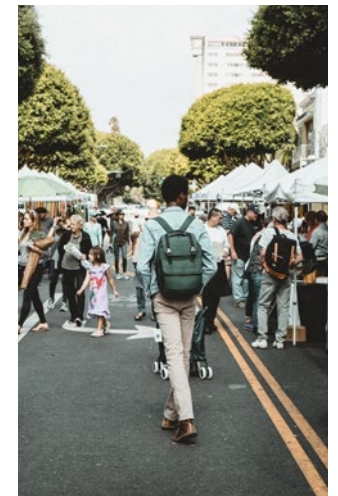
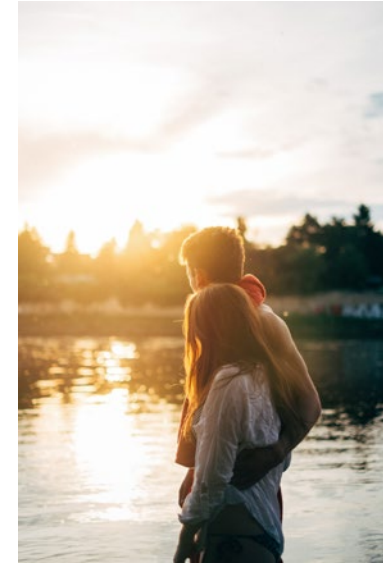
There are few buildings that have such a legendary location. Directly at the world famous East Side Gallery, with breathtaking views and direct access to the Spree River, 75 upscale rental apartments, a lifestyle hotel, cool restaurants and shops invite residents to enjoy Berlin lifestyle on the waterfront.

[pier6164.com](http://pier6164.com)



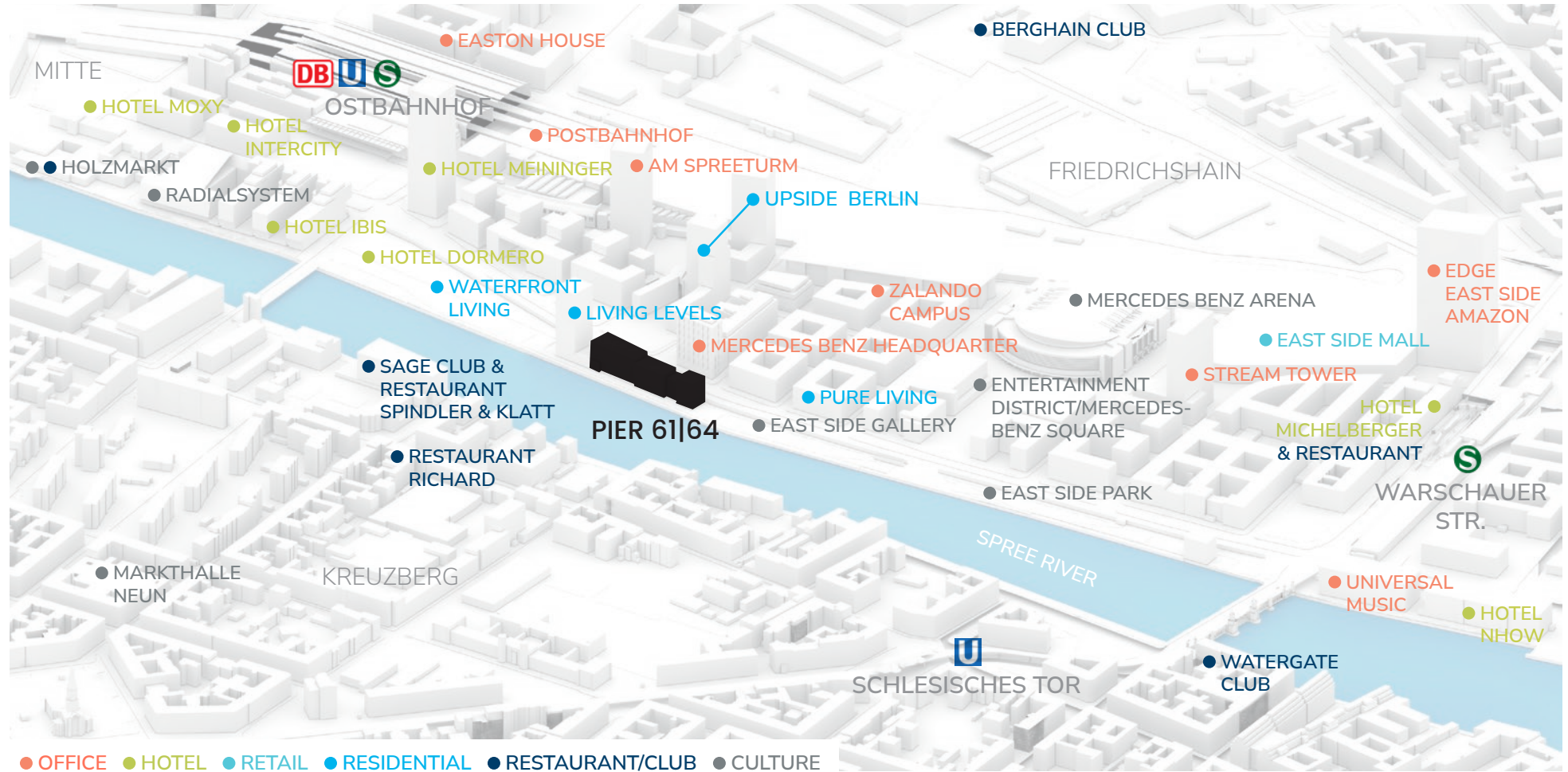
# NEW HOTSPOT

IN AN INTERNATIONAL NEIGHBORHOOD



PIER 61|64 is located in the Mediaspree, a new urban city district that stretches from Ostbahnhof to the East Side Gallery. The district is characterized by its contemporary architecture, a diverse international restaurant and club scene, and numerous historic landmarks. A neighborhood that conveys a sense of international community day and night.

# BERLIN'S MEDIASPREE



A photograph of three women running on a paved path next to a river. The scene is captured during sunset, with a warm, golden light illuminating the sky and the water. The women are in motion, running from left to right. The woman in the foreground is wearing a bright green tank top and dark leggings. The woman behind her is wearing a black tank top and shorts. The woman on the right is partially visible, wearing a black and white patterned top and black leggings. The path is paved with light-colored bricks, and a metal railing runs along the edge of the path. The river is visible in the background, with the sun low on the horizon.

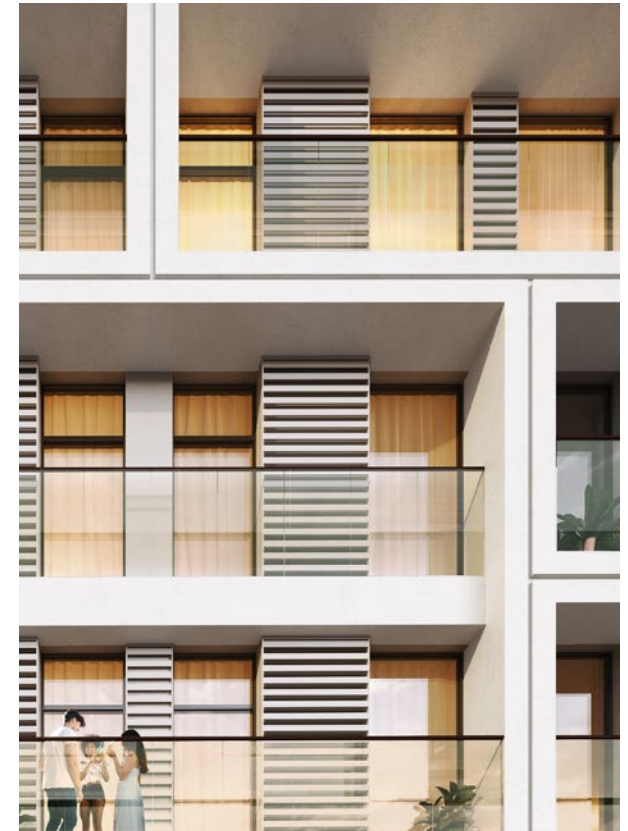
# RIVER RUN- NING WITH THE FLOW

# MORE THAN APARTMENTS

## PIER 61|64 OFFERS AND SERVICES

A highlight is the aparthotel, Locke at East Side Gallery, which belongs to PIER 61|64. In addition to 176 rooms the hotel offers a complimentary co-working space, a café, bar and restaurant, as well as an event program that is open to the neighborhood. Locke at East Side Gallery offers all residents special rates on selected services.

Residents will also be able to enjoy the various restaurants and shops that are part of the PIER promenade. Additionally, there is a concierge service available, which can be booked.



# ALL BENEFITS AT A GLANCE

- CONCIERGE SERVICE CAN BE BOOKED ON REQUEST
- USE OF THE CO-WORKING SPACE IN THE LOCKE AT EAST SIDE GALLERY
- SPECIAL RATES ON SELECTED HOTEL SERVICES AND OFFERS IN THE NEIGHBORHOOD
- PIER PROMENADE WITH RESTAURANTS AND SHOPS

Harry,  
Concierge at  
RAS Services



# LIFE AT THE SPREE RIVER

WITH RESTAURANTS & A HOTEL INSTEAD OF A FRONT LAWN

PIER 61|64 offers a total of 75 rental apartments designed by eller + eller architects. The design emphasizes the unique views of the Spree River and is timeless and stylish at the same time. All apartments have floor-to-ceiling panoramic windows, high concrete ceilings with industrial style and modern upscale furnishings.





# SPACES THAT FIT MANY DREAMS

## 75 INDIVIDUAL APARTMENTS

The smart floor plans of the single and family apartments are just as convincing as the prestigious penthouse apartments. Generous window façades, terraces and balconies offer the opportunity to enjoy life on the waterfront at any time of day or season of the year.

The apartments offer:

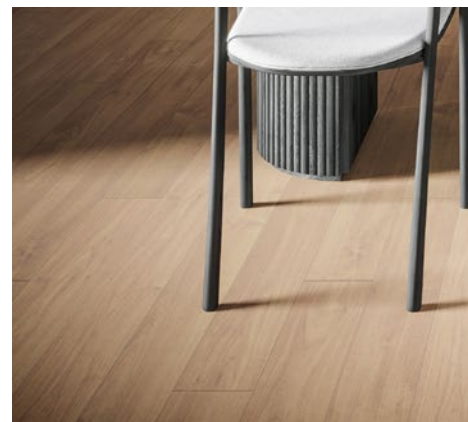
- High-end fitted kitchen
- Storage/utility room
- View of the Spree River
- Balcony

PIER 61|64

Mühlenstrasse 61–64

10243 Berlin

[pier6164.com](http://pier6164.com)



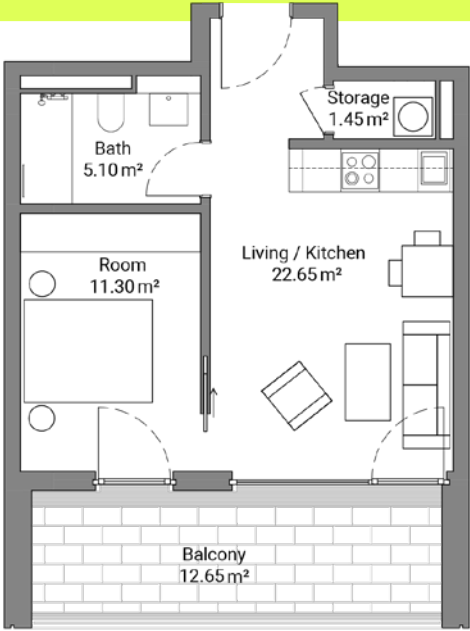


# LAVISH

4 ROOMS, APPROX. 120 m<sup>2</sup>

# COMPACT

2 ROOMS, APPROX.. 46 m<sup>2</sup>



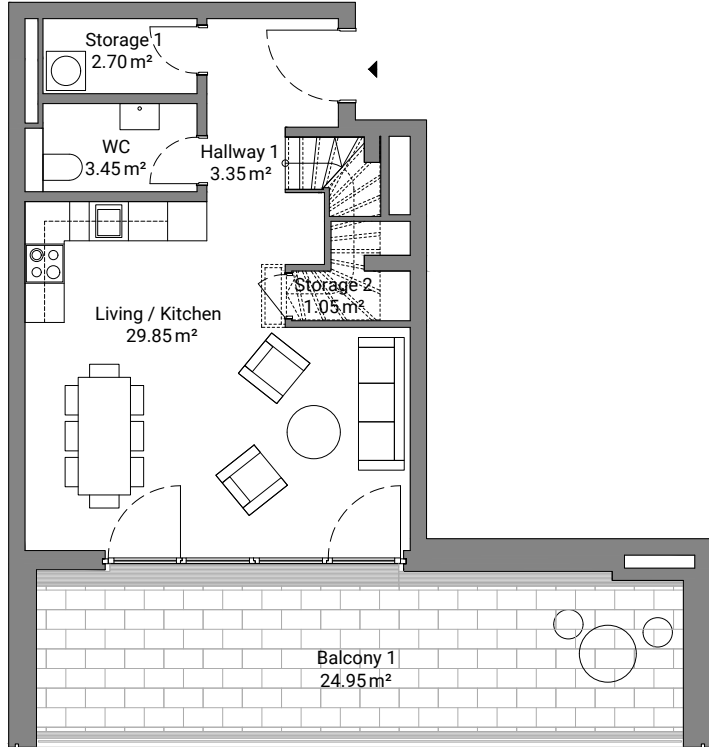
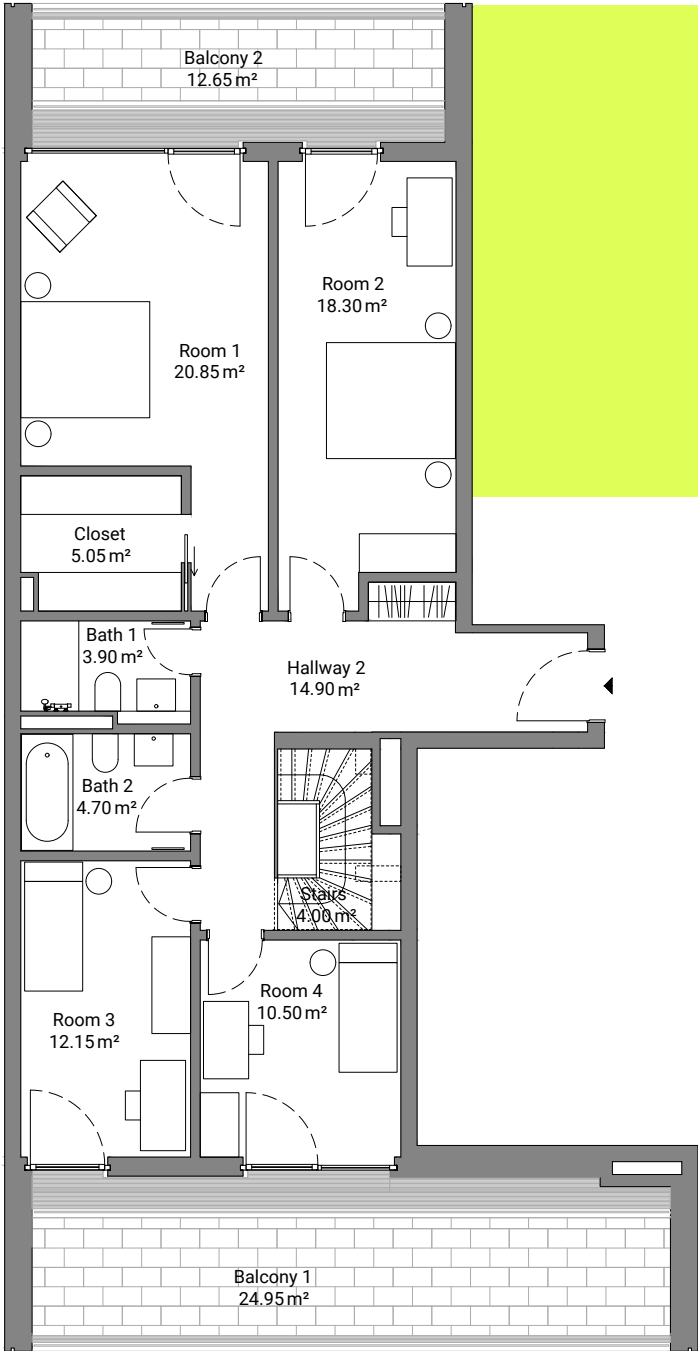
SPREE RIVER VIEW  
↓





# UNIQUE

MAISONNETTE, APPROX. 147 m<sup>2</sup>



SPREE RIVER  
VIEW









## CONTACT

For a rental offer with detailed floor plans  
and rental conditions please contact:

**Luciana Amaral**  
**Property & Tenant Relations Manager**  
**+49 30 2363137-113 | [l.amaral@trockland.com](mailto:l.amaral@trockland.com)**

Trockland Management GmbH  
Hauptstrasse 27 | Aufgang E | 10827 Berlin, Germany  
+49 30 2363137-0 | [trockland.com](http://trockland.com)

A project by

 **ALTHAFEN | TROCKLAND®**



# TROCKLAND DISCLAIMER

This information does not purport to comprise a full description of the property for any kind of investment nor to include all information that could be of interest to potential investors for such a decision. This information does not replace the need for the recipient to examine the potential investment of the property. Neither does it represent an offer to invest in the property. Neither this document nor the information contained in this document may be used as a basis for contracts, obligations or similar.

No express or implied guarantees or undertakings are given for the correctness, completeness and up-to-datedness of the information, figures, assessments and projections in this document or in any other written or verbal information provided to the recipient. Trockland Management GmbH (including all Trockland companies owning real estate property) its managing directors, officers and employees do not accept any liability in this respect.

This information must be treated confidentially and must not at any time be copied, reproduced or forwarded to other parties (as a whole

or in parts) without the prior written consent of Trockland Management GmbH. Neither Trockland Management GmbH nor the Trockland company owning the property shall be obliged to grant the recipient access to any further information, to update the information presented in this document or to correct information that proves to be incorrect during the course of the lease process.

Layouts, plans, views and features are based on information and data that may vary in the different planning stages. Visualizations are artistic illustrations that do not necessarily reflect the actual future setting. Potential investors are recommended to compile and evaluate their own information with regard to the properties and the investment which is the content of this presentation. It is recommended that every potential investor who is interested in purchasing or valuing the investment and the properties should appoint their own financial advisors or other professional consultants.

Images are subject to copyright by:  
Trockland, Graft, Locke, Pexels,  
iStock, Unsplash

